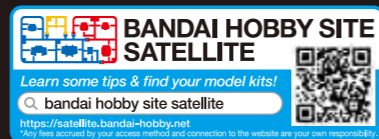


BANDAI SPIRITS MODEL KITS

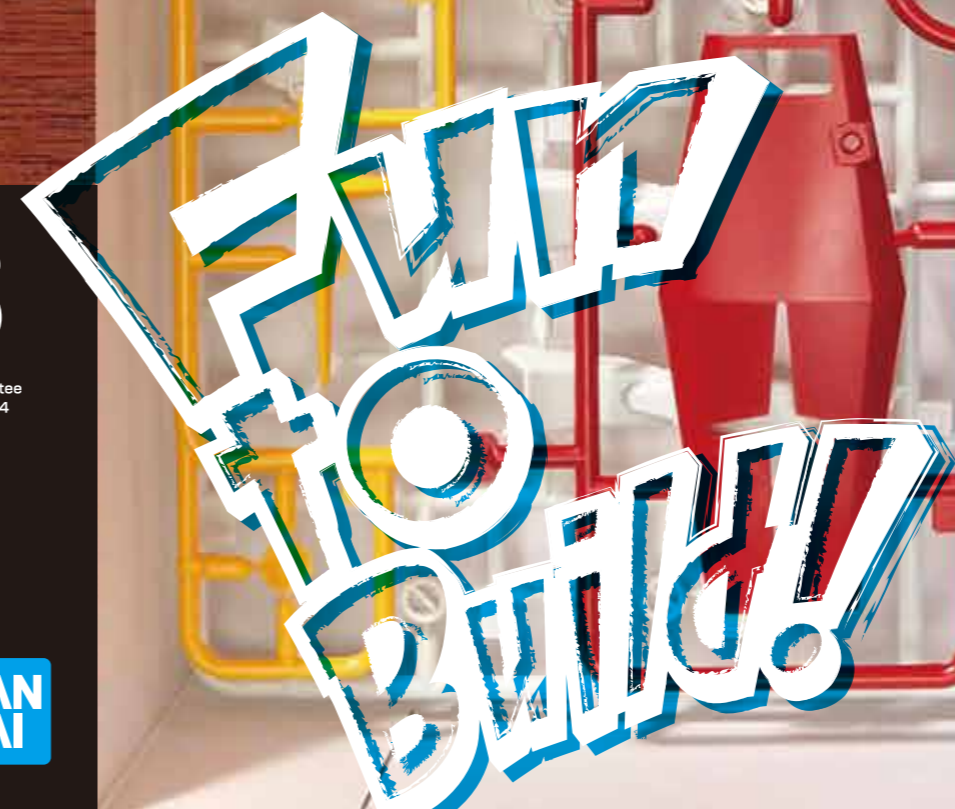


BANDAI SPIRITS MODEL KITS

©SOTSU · SUNRISE ©SOTSU · SUNRISE · MBS ©BIRD STUDIO/SHUEISHA, TOEI ANIMATION ©BIRD STUDIO/SHUEISHA ©2018 DRAGON BALL SUPER the Movie Production Committee
©Akiyoshi Hongo, Toei Animation ©Fujiko-Pro, Shogakukan, TV-Asahi, Shin-ei, and ADK ©khara ©Go Nagai/ Dynamic Planning MZ Film Partners. ©Shouji Gatou · Shikidouji/KADOKAWA/FMP14
©Nintendo, Creatures, GAME FREAK, TV Tokyo, ShoPro, JR Kikaku, ©Pokémon, TM and ® are trademarks of Nintendo. ©BANDAI SPIRITS 2019



BANDAI SPIRITS CO., LTD.



A young man with dark hair, wearing a grey hoodie and blue jeans, sits in a black chair at a wooden desk. He has a surprised expression, with his mouth open and one hand raised holding a white rectangular piece. The desk in front of him has a white box and a red-handled tool. The background is a textured blue wall. Floating around him are various model kits: a blue Doraemon character, a white and purple Gundam, a yellow and black Gundam, a yellow Pikachu, a large white and blue Gundam, a purple and green Gundam, a red and white Gundam, a purple and black Gundam, and a grey dinosaur skeleton. Several red and yellow plastic runners with parts are also visible.

When was the last time you created something by yourself?
When was the last time you were so into something that you forgot about time?
When was the last time you felt a sense of accomplishment?

We believe that plastic model kits are filled with the joy of imagination, building, discovery, and creation.

The excitement of opening the box, looking at the runners, and imagining the finished product.
The joy of cutting out the parts and then fitting them together.
The elation of gradually building it up.
The satisfaction of discovering new mechanisms and details as you build it.
And the sense of accomplishment and attachment when it's completed.

If you add a few extra touches, such as coloring, it can become a one-of-a-kind "work" in the world.

Whether you are a beginner or an expert, BANDAI SPIRITS Model Kits has something for you to enjoy.

Why choose BANDAI SPIRITS MODEL KITS?

1 NO GLUE



All of the parts can be easily put together without any glue.

2 EASY COLOR RECREATION



The one and only technology that enables four colors to be available in one set of parts, which we call it "runner".

3 RELIABLE HIGH QUALITY



We strive to use our experience and technology to deliver high-quality products to our users around the world.

4 WIDE RANGE OF VARIETIES



We have more than 4000 model kits from more than 20 characters.

What is BANDAI SPIRITS MODEL KITS

BANDAI SPIRITS has kept pursuing manufacturing technology as a toy manufacturer and has continued to strive to offer high-quality products to our customers. BANDAI SPIRITS MODEL KIT are products that were first created in 1980 and have been filled to the brim with our technology since. They have evolved to become plastic model kits that can be enjoyed by everyone from children to adults. For example, at the time of May 2020, over 700 million kits of GUNPLA have been sold all over the world.



BANDAI SPIRITS BANDAI HOBBY CENTER

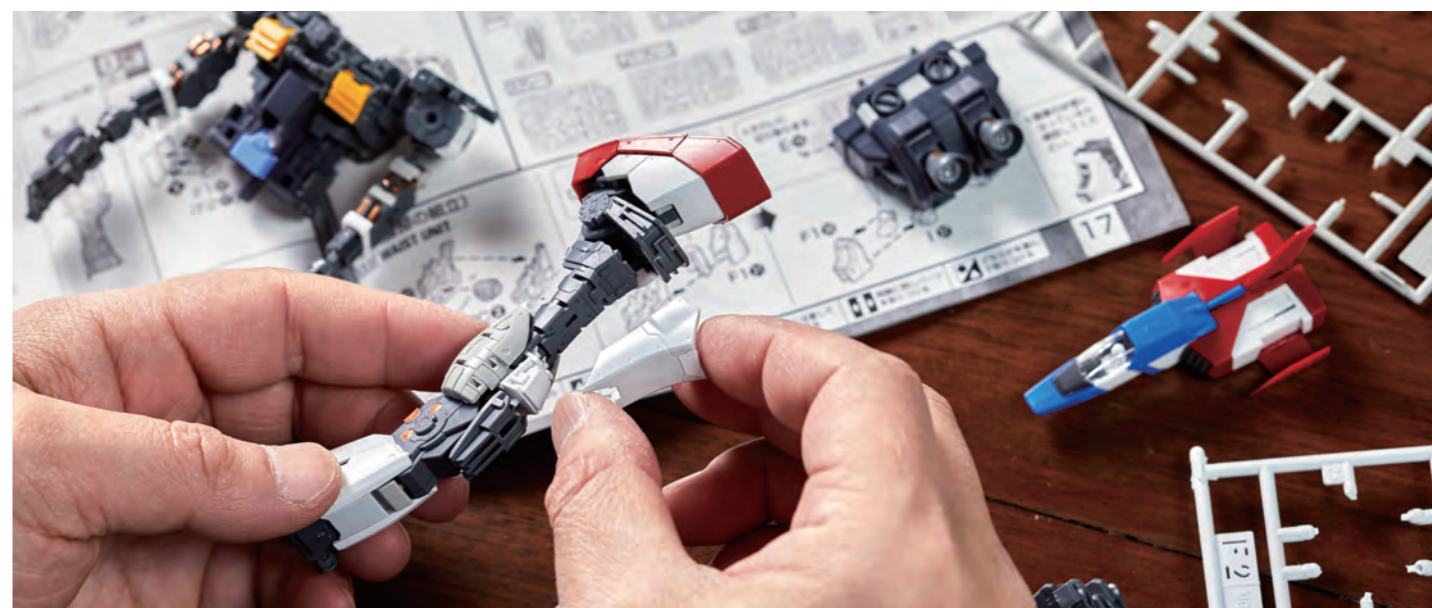
The staff carries the word "Takumi" which means "master" on their backs. Each and every person works as craftsmen in their own department and continues to try out new technology. The latest technology born here are perfected into skills and are passed on to the next generation.



FUN 1

BUILD

Anyone can easily assemble them!
Let's experience the fun of making them!



FUN 2

DISCOVER

You can learn something new during the process!
The unique fun of making things!



FUN 3

CUSTOMIZE

You don't have to stop after assembling them!
The excitement of BANDAI SPIRITS MODEL KITS lies
beyond making them!



**Fun
to
Build!**

FUN 1

1 Choose your kit



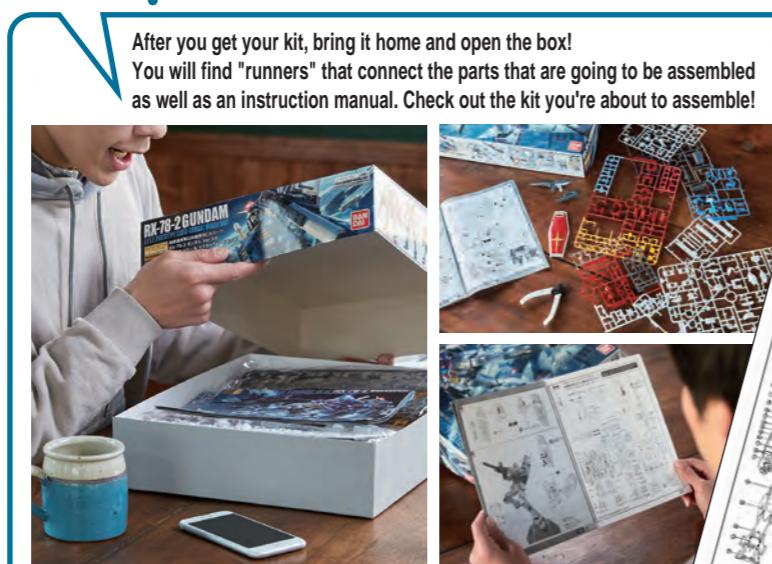
I'm going with this one!

Try and pick a kit you like when you find BANDAI SPIRITS model corners at stores or at events! The exciting view of different kits stacked up high is unique to model corners!

BUILD

The fun of making things is hidden in all processes of a BANDAI SPIRITS plastic model kit, from the moment you choose kits to assembling and customizing them.

2 Open the box



After you get your kit, bring it home and open the box! You will find "runners" that connect the parts that are going to be assembled as well as an instruction manual. Check out the kit you're about to assemble!

They almost look like information for actual robots!

4 Posing

After you finish assembling, you can enjoy posing your model kits! The wide range of articulations enables natural and dynamic poses.

Make the height of both shoulders even.

The body should be "S" figure(not straight).

In order to get a good looking finish, there are some tips to keep in mind even for the basic standing pose!

The angle of the chin should be pulled down.

Slightly bend the arms.

Turn the toes outward.

Add expressions of movement as you like, keeping in mind the overall balance! Combination with equipment widens the range of expressions.

3 Assemble

Nippers

You can use nail clippers if you don't have nippers.

It's as though you're assembling an actual robot!

After you check the rest of the contents, begin assembling! No glue or special skills are required, so they can be assembled easily!

Fun to Build!

FUN 2



DISCOVER

The more you assemble, the more discoveries come out!
 Try to discover many kinds of FUN by making things by assembling various kits!
 Here are three examples!

What does that robot look on the inside? Find the secrets of mechanics!

The structures and parts inside the robots are all important and are used to support themselves. Learn about each of the mechanic functions of the "Figure-rise Mechanics DORAEMON" during assembling it!

Figure-rise Mechanics DORAEMON

The fun of making can be found by putting together the flat parts and recreating human characters!

It isn't only robots or other mechs that have parts that can be easily assembled, you can also make BANDAI SPIRITS' plastic models of living things, including human characters! We'll show you the secret of how human characters are recreated as model kits using "Figure-rise Standard SUPER SAIYAN BROLY FULL POWER" as an example!



Parts on the runner seem to be unrelated, but as they are released and assembled according to the instruction manual... A powerful arm can be made!



Parts that seem to be unrelated become three-dimensional sections as they are assembled!



The parts are decently detailed with bumps and crevices to faithfully recreate Broly's muscles.

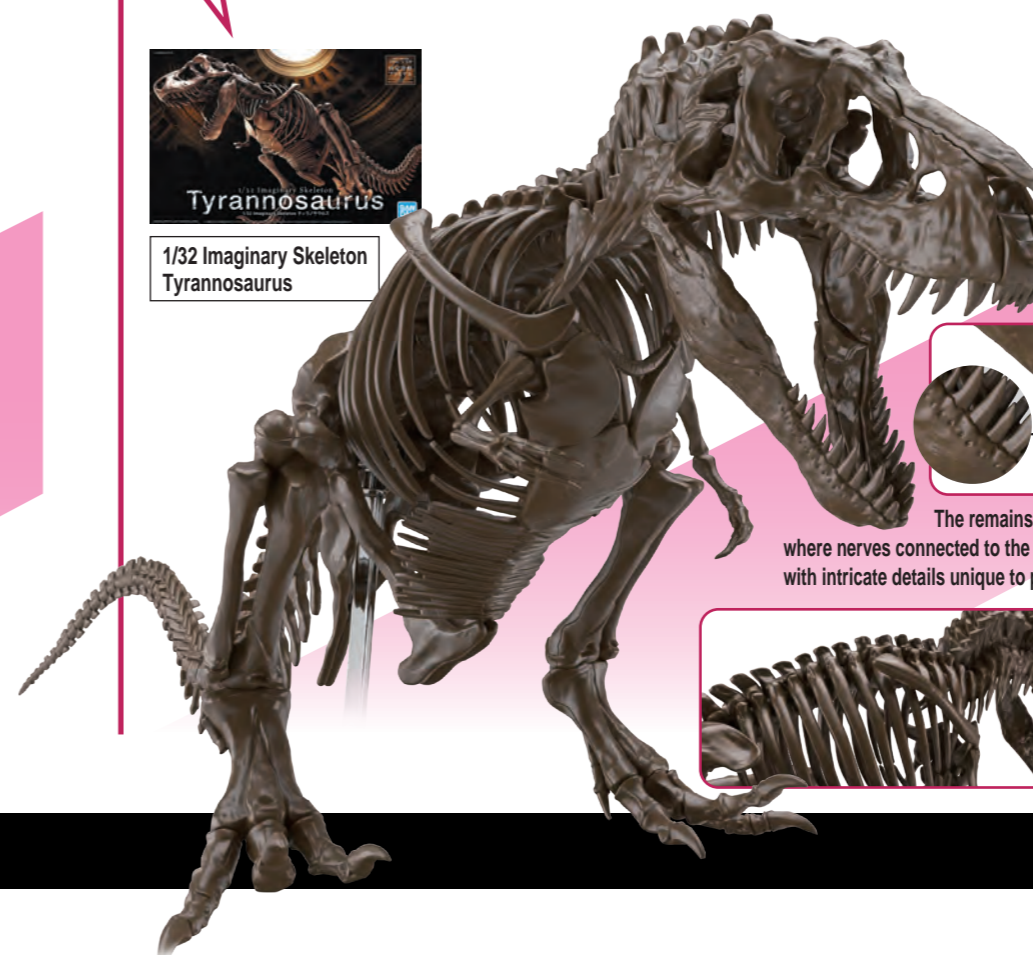


Imagining life from ancient memories in the form of fossils!

It is a plastic model kit that offers a simulation of assembling a skeletal specimen!



1/32 Imaginary Skeleton Tyrannosaurus



The remains of the holes in the skull where nerves connected to the lips have been recreated with intricate details unique to plastic model kits.

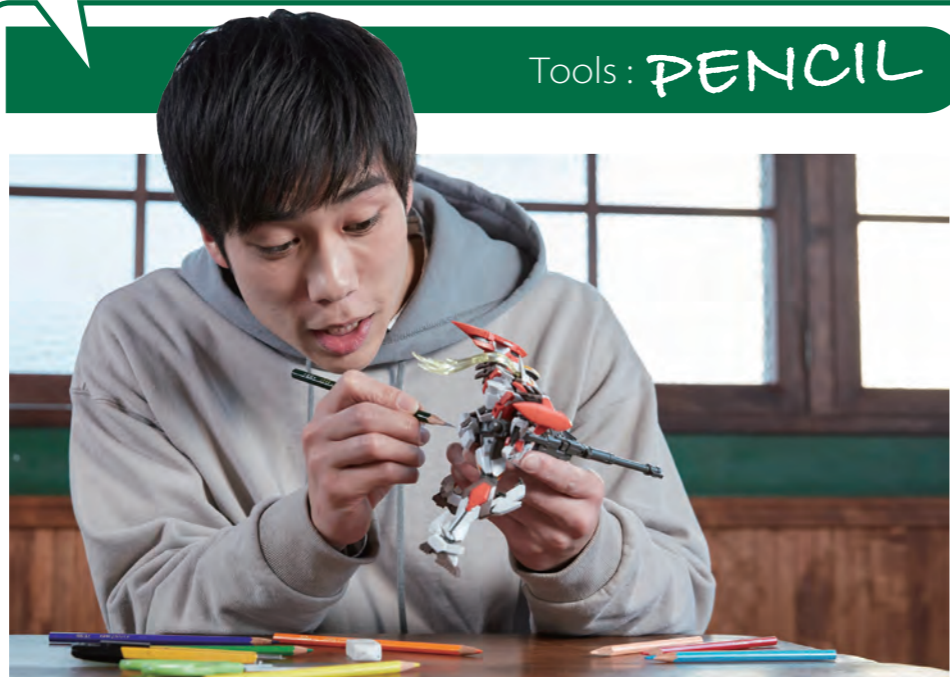


Teeth marks on the upper jaw created due to the teeth on the lower jaw have been recreated.



Each of the bones and even the tips of the teeth are thoroughly detailed. It is a product that can be assembled to garner an even deeper understanding of the Tyrannosaurus.

1 Easily customize kits using items in your house!



I want to make the fine details on my robot to stand out!

Before

Use the tip of your pencil and draw along the mold line.

After

The molds will stand out and give the robot a hefty look!

I want to make my robot more realistic by adding dirt and give it a used feel!

Before

Shave the core of your pencil to create a powder and apply it throughout the kit with a cotton swab.

After

It will look much better in photos after you apply the shavings!

1/100 GUNDAM BARBATOS

CUSTOMIZE

FUN TO BUILD doesn't end when you're done assembling the model kit! The ways of playing are up to your imagination and creativity! Here are a few examples.

2 Tools for model kits can be used to make your results reach the next level!

Panel lining pens and other designated tools can be used to recreate realistic effects such as dirt and peeled off paint.



Stage of dreams for model kits builders around the world!

GBWC 2019
GUNPLA BUILDERS WORLD CUP
World Championship
Official contest for BANDAI SPIRITS GUNDAM MODEL KITS : GUNPLA



For Beginner

FIND YOUR PERFECT GUNPLA!

GUNPLA comes in many different series from easy-assembly models to high levelled models. Find a GUNPLA that best suits your taste!

GUNDAM FREE ANIME & INFORMATION



FOR MORE GUNPLA INFORMATION



For Professional

SD GUNDAM EX-STANDARD

COOL AND CUTE
A WHOLE NEW WORLD OF GUNPLA
Striking a keen balance between cute and cool, this tyke-sized series is easy assemble and easy on the wallet.

CUSTOMIZE YOUR SD!

SD GUNDAM EX-STANDARD vGUNDAM		
NON scale	size	about 8.5 cm
	number of parts	about 40
	JPN price	600 JPY

6 runners

ENTRY GRADE
エントリーグレード

GUNPLA FOR BEGINNERS FROM A NEW GENERATION!
The best choice for your first experience.

FUN AND EASY!

ENTRY GRADE 1/144 RX-78-2 GUNDAM		
1:144 scale	size	about 12 cm
	number of parts	about 70
	JPN price	700 JPY

4 runners

HG
HIGH GRADE

A VAST LINEUP OF COLLECTABLES
A collectable series featuring a broad lineup of easy-to-assemble kits.

COLLECT & ENJOY!

HG 1/144 GUNDAM BARBATOS		
1:144 scale	size	about 12.5 cm
	number of parts	about 130
	JPN price	1,000 JPY

7 runners

RG
REAL GRADE

ENTHUSIASM OVER BUILDING MOBILE SUIT AT YOUR FINGERTIPS
The rich colors, movement, texture, and pre-built inner frames all take part pursuing "reality".

THE "REAL"!

RG 1/144 FREEDOM GUNDAM		
1:144 scale	size	about 12.5 cm
	number of parts	about 240
	JPN price	2,500 JPY

10 runners

MG
MASTER GRADE

PRECISE DETAILS AND GIMMICKS IN 1:100 SCALE
The best proportion and precise details realized along with the wide movability and docking gimmicks!

PLAY VALUES!!

MG 1/100 WING GUNDAM ZERO EW Ver.Ka		
1:100 scale	size	about 16.7 cm
	number of parts	about 440
	JPN price	5,500 JPY

23 runners

PERFECT GRADE

THE ULTIMATE GUNPLA
Embodies the ultimate form of GUNPLA with the latest technologies.

THE ULTIMATE!

PG 1/60 OO GUNDAM SEVEN SWORD/G		
1:60 scale	size	about 30 cm
	number of parts	about 800
	JPN price	23,000 JPY

45 runners

MEGA
MEGA SIZE MODEL

MEGA-SIZED MODEL FOR ALL GUNPLA FANS
Approximately 28cm high with big pieces of parts for easiest assembly ever!

HUGE BUT EASY!

MEGA SIZE MODEL 1/48 UNICORN GUNDAM (DESTROY MODE)		
1:48 scale	size	about 45.2 cm
	number of parts	about 330
	JPN price	10,000 JPY

24 runners

FIND YOUR FAVORITE

Not just GUNPLA, BANDAI SPIRITS has high-variety of character line-ups!

CHARACTERS!

Check out some characters that we have for plastic model kits!

FOR MORE
BANDAI SPIRITS
MODEL KITS INFORMATION



DRAGON BALL SUPER

ENTRY GRADE SUPER SAIYAN GOD SUPER SAIYAN SON GOKU		
size	about 15cm	
number of parts	about 40	
JPN price	900 JPY	

4 runners

WARGREYMON (AMPLIFIED)

Figure-rise Standard Amplified WARGREYMON		
size	about 17cm	
number of parts	about 190	
JPN price	4,000 JPY	

14 runners

ドラえもん

Figure-rise Mechanics DORAEMON		
size	about 10cm	
number of parts	about 80	
JPN price	2,500 JPY	

5 runners

POKÉMON

Pokémon Model Kit Quick!! 01 PIKACHU		
size	about 7.5cm	
number of parts	about 15	
JPN price	650 JPY	

2 runners

30 MINUTES ASSEMBLY

30MM 1/144 eEXM-17 ALTO [WHITE]		
size	about 11.1cm	
number of parts	about 90	
JPN price	1,280 JPY	

4 runners

EVANGELION

RG Multipurpose Humanoid Decisive Weapon, Artificial Human Evangelion Unit-01		
size	about 17.5cm	
number of parts	about 280	
JPN price	4,500 JPY	

13 runners

DYNAMIC CHARACTERS

HG 1/144 MazingerZ (MazingerZ Infinity Ver.)		
size	about 17.3cm	
number of parts	about 220	
JPN price	3,500 JPY	

13 runners

Imaginary Skeleton

1/32 Imaginary Skeleton Tyrannosaurus		
size	about 35.5cm	
number of parts	about 70	
JPN price	3,600 JPY	

7 runners

**FUN
for the
FUTURE**



SUSTAINABILITY

BANDAI NAMCO Group has launched GUNDAM UNIVERSAL CENTURY DEVELOPMENT ACTION(GUDA), a project which features the GUNDAM series and focuses on sustainability, and we have joined hands with fans and external partners around the world for the children of the future are planning and carrying out various actions.

Learning with model kits!



▲ Free trial kit

Although it has not yet started worldwide, "GUNPLA Academia", where fifth and sixth grade elementary school students learn using GUNPLA, has been carried out in Japan. This is a free lesson package where students learn about the fun of manufacturing and sustainability efforts to deal with global environmental problems during the manufacturing process of GUNPLA and the recycling of plastics through assembling plastic model kits and videos. Not only can they learn the fun, simplicity, and safety of assembling models by building trial kits, but they also know the detailed process and efforts for the environment with the video.

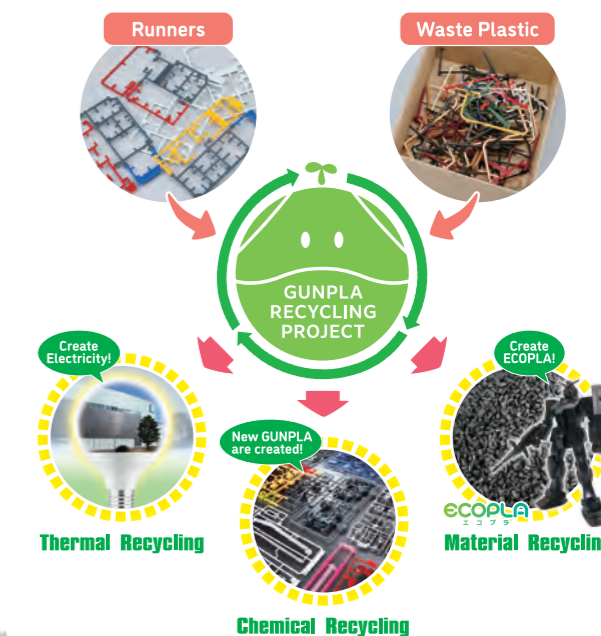
How our model kits faces the environment?

We have reduced the number of runners (the frames for plastic model kit parts) by using multicolor molding technology, which reduces the burden on the environment. We have also developed ECOPLA, which are kits manufactured by reusing raw waste materials which are produced during the manufacturing process and excess materials that end up not being used when making our products.

In 2021, we launched the Gundam Recycling Project in Japan to collect the runners of GUNPLA and aim to convert them into new plastic model kits through chemical recycling, an advanced form of recycling technology.

The gathered runners are combined with the waste plastic produced from the GUNPLA manufacturing plant, and a portion of the plastic is used to perform experiments to achieve chemical recycling. The rest of it is used for material recycling and thermal recycling.

GUNPLA RECYCLING PROJECT



What is LIMEX?

A next-generation molding material as an alternative to plastic

We are actively working to reuse and reduce the use of plastics. Although it is yet to be used for GUNPLA, we have adopted LIMEX (developed by TBM Co., Ltd.), a new material that mainly consists of limestone, for certain plastic model kits. We are currently aiming to use recycled materials for all plastic models for a better future.



◀ DINOSAUR MODEL KIT
LIMEX SKELETON Tyrannosaurus

LIMEX pellet and runner ▶



Please check about GUDA here. : <https://www.bandainamco.co.jp/guda/en/>



**FUN
TO
BUILD!**